

3. On a Collection of Frogs from Yurimaguas, Huallaga River, Northern Peru. By G. A. BOULENGER, F.Z.S.

[Received December 6, 1883.]

(Plates LVII., LVIII.)

An interesting collection of Frogs, made at the above locality by Dr. Hahnel, adds considerably to our fragmentary knowledge of the Batrachian fauna of North-eastern Peru. It contains examples of 18 species, 8 of which are new. Examples of the new and of some of the rarer known forms have been secured for the British Museum. The specimens having been deposited in very weak spirit and protected from the light, the coloration is wonderfully well preserved.

1. *PROSTHERAPIS FEMORALIS*, sp. n. (Plate LVII. fig. 1.)

Snout depressed, projecting, truncate, with angular canthus rostralis and vertical loreal region; nostril nearer the tip of the snout than the eye; interorbital space broader than the upper eyelid; tympanum perfectly distinct, half the diameter of the eye. First finger longer than second; toes with a slight rudiment of web; disks of fingers and toes small; subarticular tubercles small; two very small metatarsal tubercles. The hind limb being carried forward along the body, the tibio-tarsal articulation reaches the posterior border of the eye. Skin tubercular above. Blackish brown above, limbs lighter and marbled with darker; a narrow white line on each side of the body, extending on the outer border of the upper eyelid and the canthus rostralis to the end of the snout, where it is continuous with its fellow; a second parallel white line on the flanks; a third on the upper lip, from below the nostril, extending to the arm; lower surface of arm and base of same, and an oblique band on inner half of upper surface of femur, bright yellow; throat and breast blackish brown; abdomen and lower surface of hind limbs brown- and white-marbled. From snout to vent 27 millim.

Two specimens, ♂ ♀.

Closely allied to *P. inguinalis*, Cope; distinguished by the distinct tympanum and the coloration.

2. *PHYLLODROMUS PULCHELLUS*, Espada.

3. *DENDROBATES RETICULATUS*, sp. n. (Plate LVII. fig. 2.)

Snout truncate, longer than the diameter of the eye; loreal region vertical; interorbital space broader than the upper eyelid; tympanum scarcely distinct, half the diameter of the eye. First finger not extending so far as second; disks of fingers large, truncate, of toes smaller; subarticular tubercles feebly developed; two scarcely distinct metatarsal tubercles. The hind limb being carried forward along the body, the tarso-metatarsal articulation reaches a little beyond the tip of the snout. Skin smooth. Upper surface of head, back to sacrum, and a spot on the chin, pink; the rest of the animal

black, elegantly reticulated with grey. From snout to vent 17 millim.

Closely allied to *D. tinctorius*.

Several specimens, probably young.

4. *DENDROBATES FANTASTICUS*, sp. n. (Plate LVII. fig. 3.)

Closely allied to *D. tinctorius* and *reticulatus*, but differing from the former by the longer limbs, the tarso-metatarsal articulation reaching beyond the tip of the snout, and from both by the belly being granulate. Head to fore limbs above and below yellow; humerus above, and the borders of the yellow colour white; the rest of the body and limbs black, with wide-meshed grey reticulation. Male with a subgular vocal sac. From snout to vent 20 millim.

Four specimens, ♂ ♀.

5. *DENDROBATES TRIVITTATUS*, Spix.

The lines and other markings on the upper surfaces bright yellow.

6. *DENDROBATES HAHNELI*, sp. n. (Plate LVII. fig. 4.)

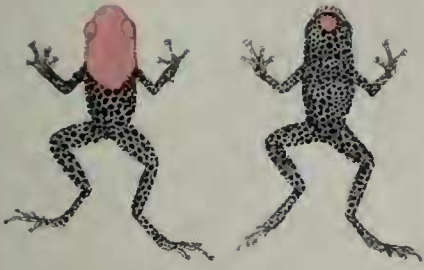
Snout truncate, as long as the diameter of the eye; loreal region vertical; interorbital space broader than the upper eyelid; tympanum indistinct. Fingers and toes slender, the tips dilated into small disks; first and second fingers equal in length; subarticular tubercles feebly developed; two scarcely prominent metatarsal tubercles. The hind limb being carried forward along the body, the tarso-metatarsal articulation reaches beyond the tip of the snout. Back slightly tubercular. Black; limbs above blackish grey, black-barred; a narrow white line, turning to bright yellow near the loins, on each side of the body, extending on the outer border of the upper eyelid and the canthus rostralis to the end of the snout, where it unites with its fellow; a white line on the upper lip, from the vertical of the anterior border of the eye to the arm; a bright orange-yellow spot at axilla, another on upper surface of femur near the loin, and a third on inner surface of tibia near the femur; belly and lower surface of limbs marbled with grey. Male with a subgular vocal sac. From snout to vent 23 millim.

Allied to *D. trivittatus*.

Several specimens, ♂ ♀.

7. *PHYLLOBATES TRILINEATUS*, sp. n. (Plate LVIII. fig. 1.)

Snout obtuse, as long as the diameter of the eye; loreal region vertical; nostril slightly nearer the tip of the snout than the eye; interorbital space broader than the upper eyelid; tympanum concealed. Fingers slender, moderately elongate, first extending beyond second, fourth extremely short; toes slender, with rudiment of web; disks small; subarticular tubercles feebly developed; two slightly prominent metatarsal tubercles. The hind limb being carried forward along the body, the tibio-tarsal articulation reaches centre of eye. Skin perfectly smooth. Dark brown above, limbs



2.



3.



4.



1.



R Mntern del et lith.

Mntern Bros Chromo imp

- 1 PROSTHERAPIS FEMORALIS
- 2 DENDROBATES RETICULATUS
- 3 DENDROBATES FANTASTICUS.
- 4 DENDROBATES HAHNELI.

